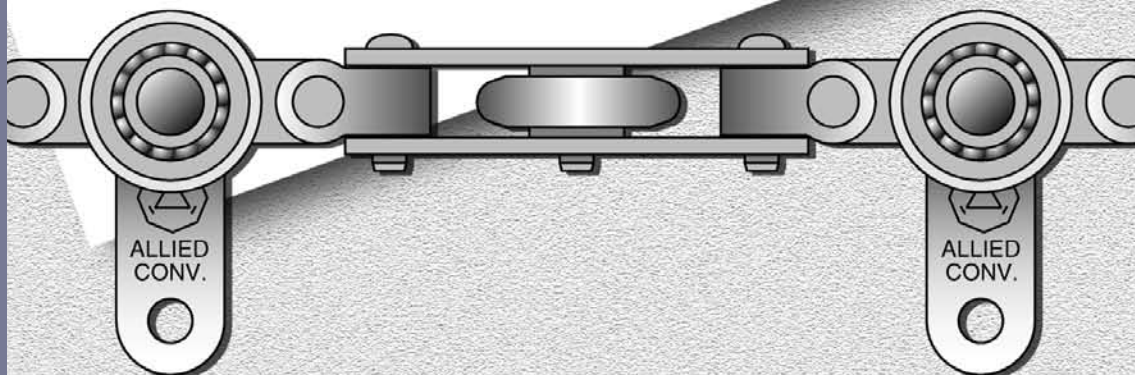


ALL-FLEX[®]

MONOVEYORS



January, 2009

Founded in 1958 in Pickering, Ontario, Allied Conveyors Limited established a reputation as an industry leader in the design, manufacture and installation of premium quality materials handling systems. Recently acquired by interests in the United States, the company now operates under the name Allied Conveyor Systems, Inc. and proudly continues the 50 year old company traditions from Statham, Georgia.

We offer a wide variety of overhead conveyors that are suitable for various applications, from paint finish and processing, to in-line and flexible assembly operations in the automotive, electronic, agriculture, and many other industries. Our conveyors have also established a strong presence for distribution and warehousing applications.

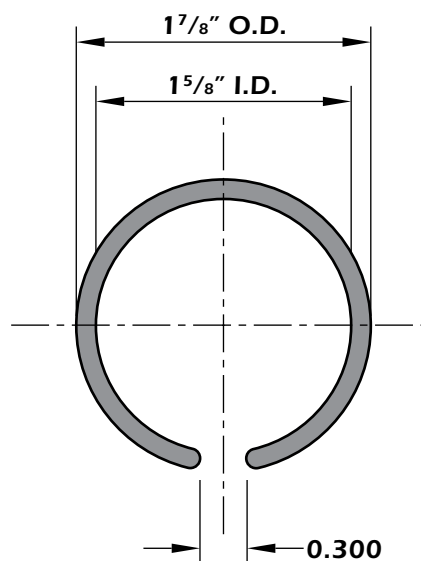


This catalog illustrates the various Allied AllFlex® Series Components available for use in making up a conveyor system. Allied Conveyor Systems, Inc. disclaims all responsibility for any equipment or system, malfunction, violation of law, property damage, personal injury or any damages resulting from the equipment selection, design, installation or operation carried out by a contractor.

ENCLOSED TRACK:

The track is a rolled tubular section of SAE 1035 high carbon manganese steel, stocked in 10' 0" and 20' 0" lengths.

Available in #316 Stainless Steel on special order.

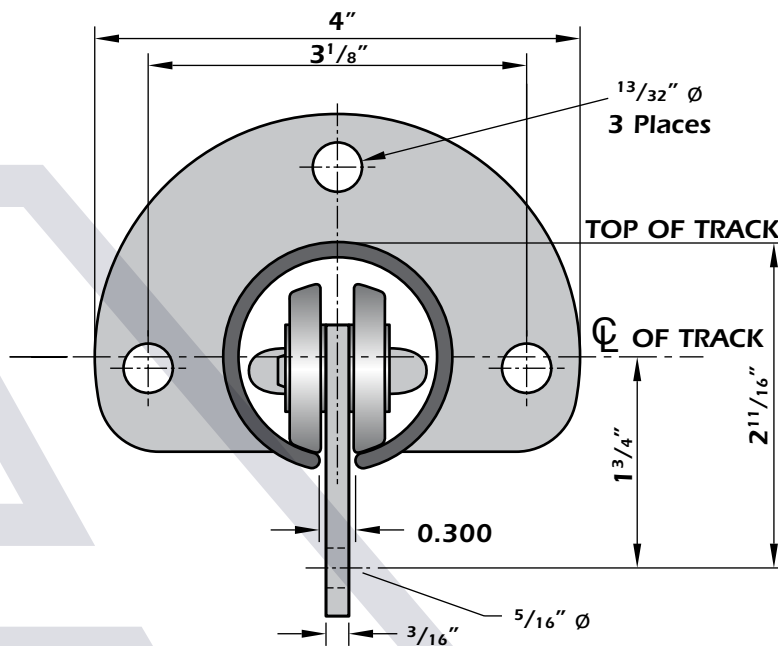


AF 60104
STRAIGHT TRACK SECTION
Weight: 2.20 lbs per ft.

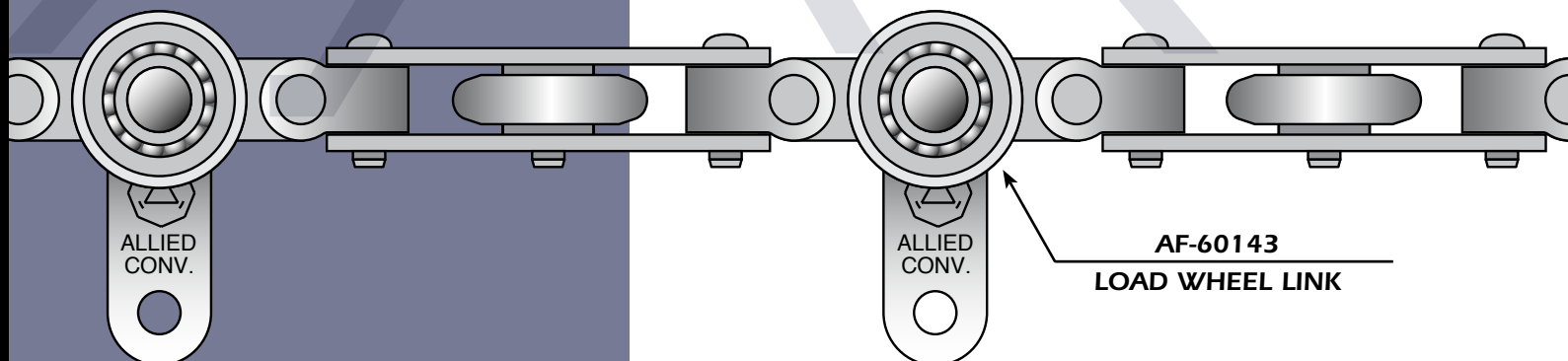
CHAIN PULL:

For maximum chain life, the chain pull should be limited to no more than 600 pounds using a single drive unit, which provides a safety factor of 8.25:1.

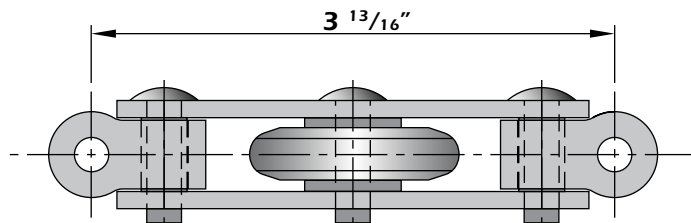
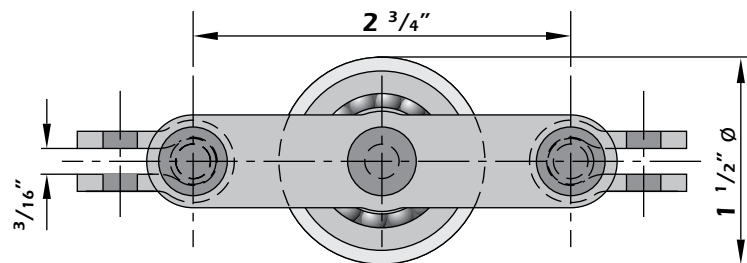
The ultimate tensile strength is 4,950 pounds.



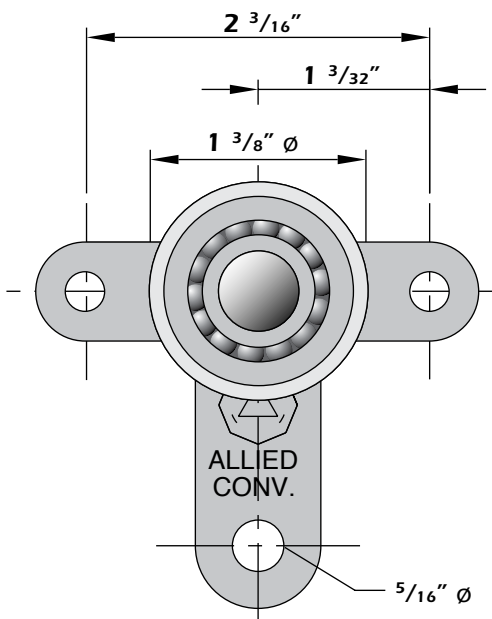
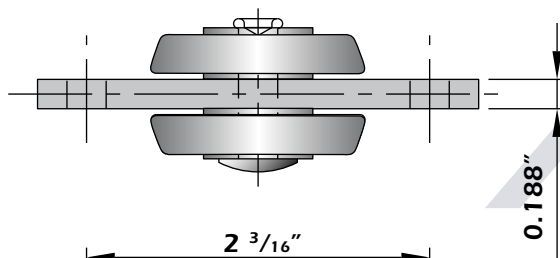
TRACK CROSS SECTION
C/W END PLATE



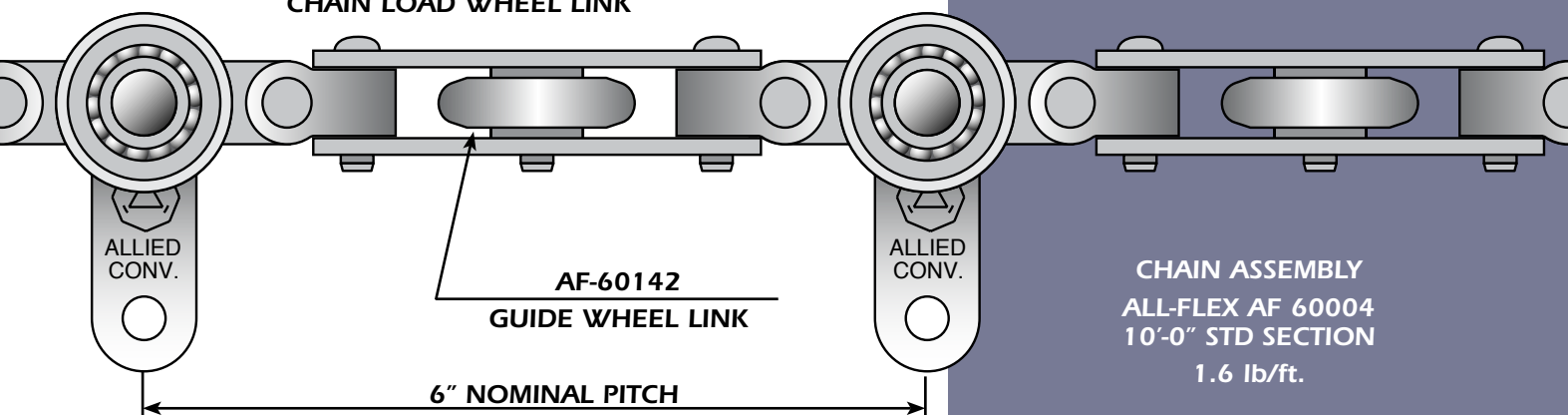
AF-60143
LOAD WHEEL LINK



**AF-60142
CHAIN GUIDE WHEEL LINK**



**AF 60143
CHAIN LOAD WHEEL LINK**



GUIDE WHEEL LINK:

- 1-1/2" diameter machined steel wheel
- Heat treated to Rockwell 58-62 "C" scale
- C/W 14 Grade 500 balls .187" in diameter riveted to double chain side bars of C-1045 high carbon steel, hardened to Rockwell 37-41 "C" scale

LOAD LINK:

- Consists of two 1-3/8" diameter wheels heat treated to Rockwell 58-62 "C" scale
- Each wheel is C/W 14 Grade 500 balls .187" in diameter, riveted to a single chain link .188" thick of C-1045 high carbon steel hardened to Rockwell 37-41 "C" scale.

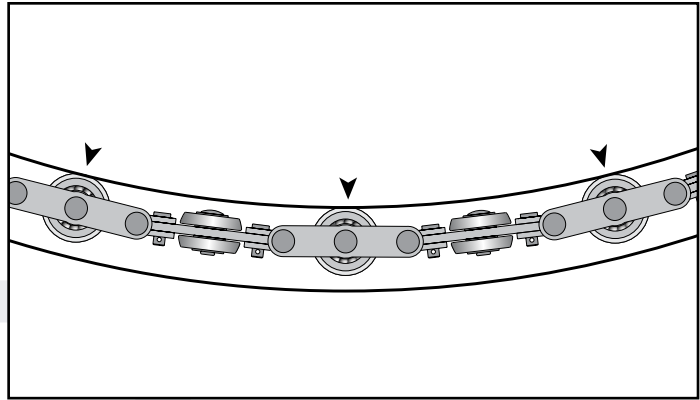
CHAIN ASSEMBLY:

- 6" Nominal Pitch
- 50 lb. Loading Per Trolley
- Weight 1.6 lb/ft.

**CHAIN ASSEMBLY
ALL-FLEX AF 60004
10'-0" STD SECTION
1.6 lb/ft.**

HORIZONTAL TRACK TURNS:

Horizontal curves are available with radii of 12" & 24". Available in other radii on special order.



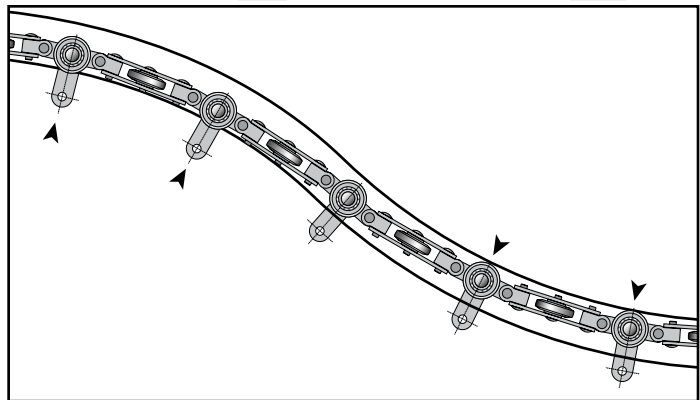
HORIZONTAL TURNS

This horizontal turn with the top removed illustrates how the chain passes around the curve. The lateral wheels ride on the side of the track, which guides the chain smoothly around a horizontal turn without the use of special guides, traction wheels or roller turns.

VERTICAL CURVES:

Vertical curves are available with radii of 18" and 24". Available in other radii on special order.

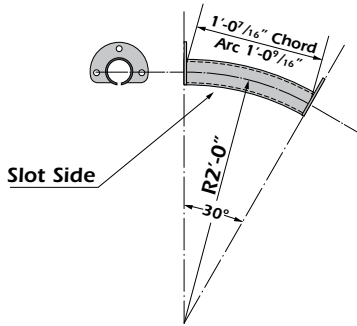
NOTE: All horizontal & vertical curves are heat treated to Rockwell 35-40 "C" scale for long life.



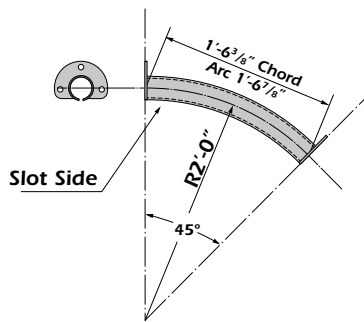
VERTICAL CURVES

This compound vertical curve with one side removed illustrates how the vertical chain wheels contact the top of the lower curve and the bottom of the upper curve.

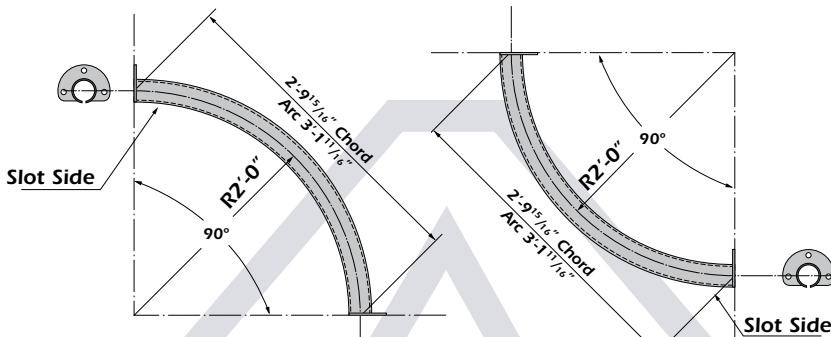
UPPER VERTICAL CURVES



**AF-60122 UPPER VERTICAL
CURVE 2'-0" RAD. X 30°**

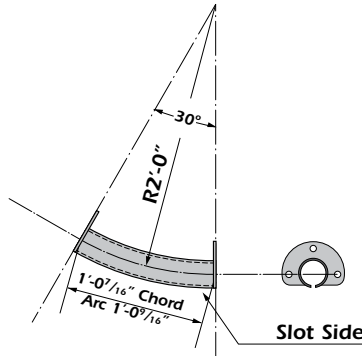


**AF-60123 UPPER VERTICAL
CURVE 2'-0" RAD. X 45°**

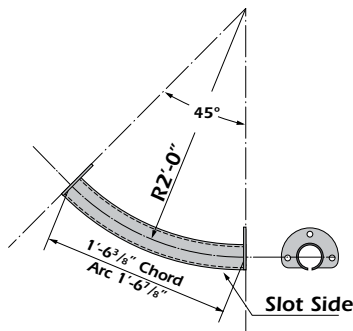


**AF-60124 UPPER VERTICAL
CURVE 2'-0" RAD. X 90°**

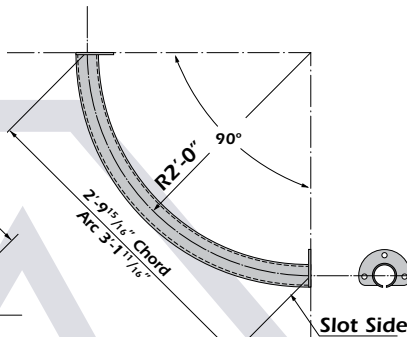
LOWER VERTICAL CURVES



**AF-60127 LOWER VERTICAL
CURVE 2'-0" RAD. X 30°**

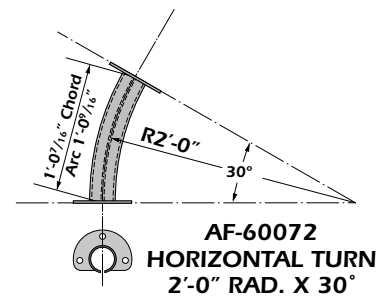


**AF-60128 LOWER VERTICAL
CURVE 2'-0" RAD. X 45°**

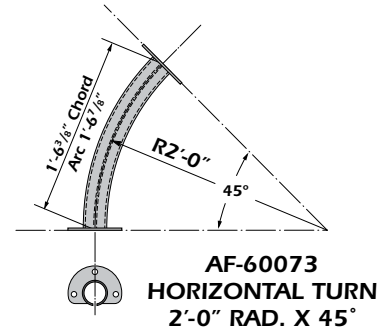


**AF-60129 LOWER VERTICAL
CURVE 2'-0" RAD. X 90°**

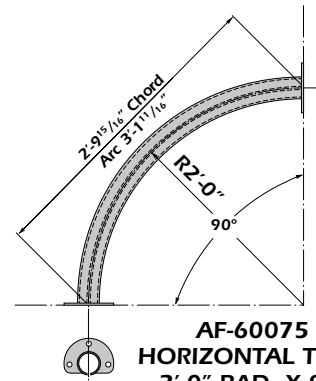
HORIZONTAL TURNS



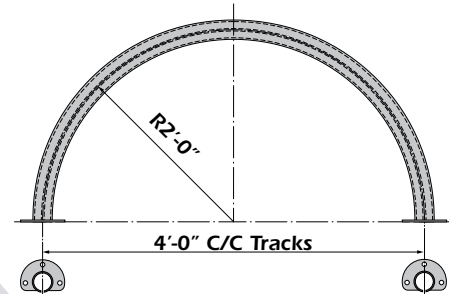
**AF-60072
HORIZONTAL TURN
2'-0" RAD. X 30°**



**AF-60073
HORIZONTAL TURN
2'-0" RAD. X 45°**



**AF-60075
HORIZONTAL TURN
2'-0" RAD. X 90°**

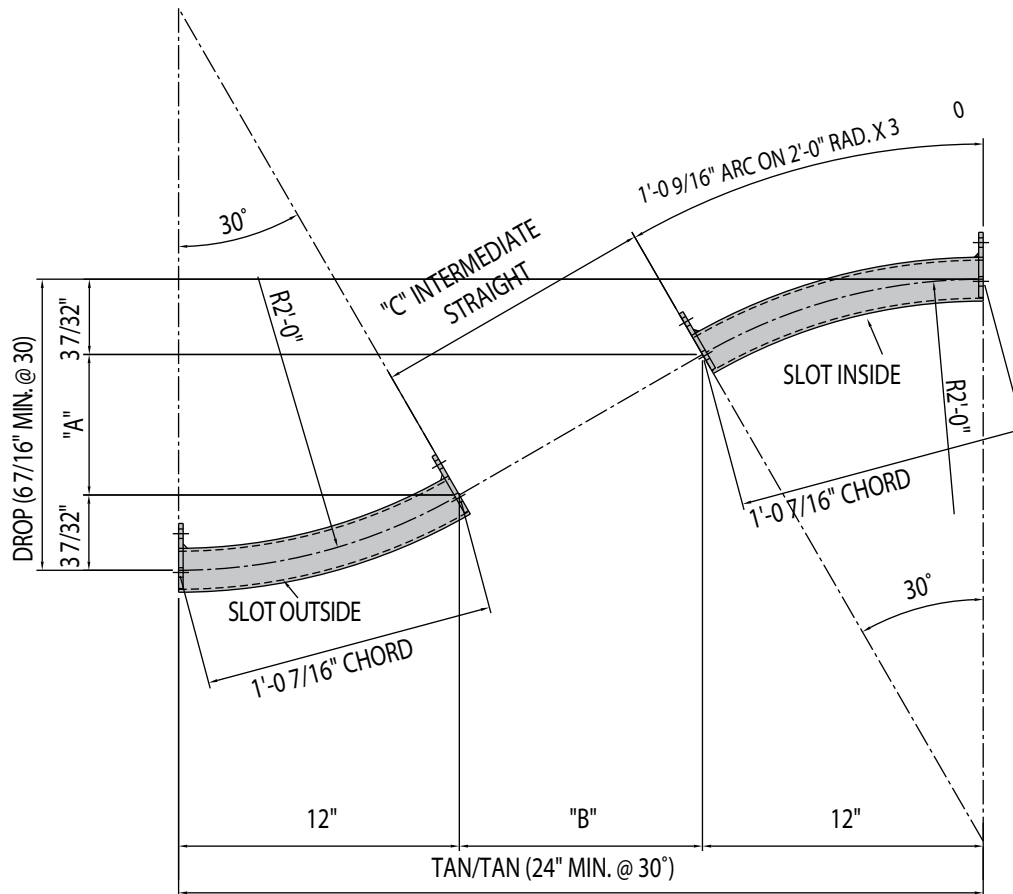


**AF-60076 HORIZONTAL TURN
2'-0" RAD. X 180°**

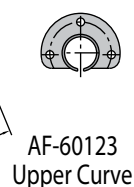
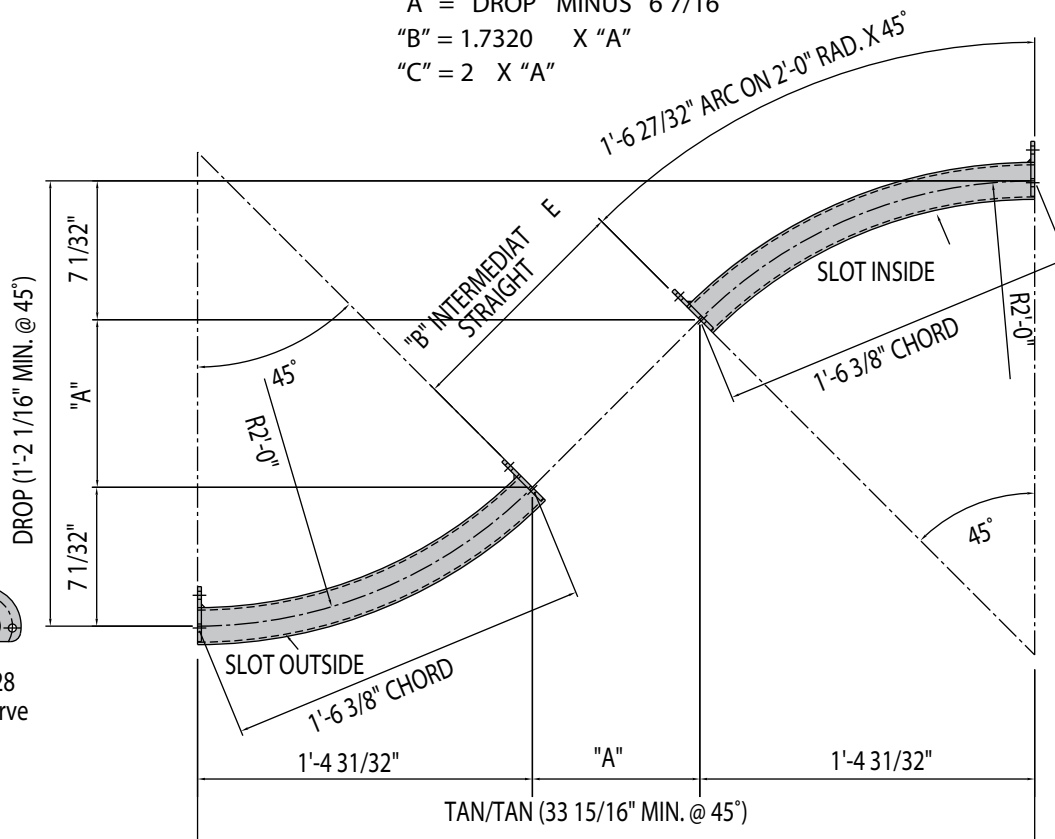
The horizontal and vertical curves illustrated above are carried in stock. Additionally, special radius or degree curves can be fabricated to-order.

NOTE: All horizontal and vertical turns are heat treated on the contact surface to Rockwell 35-40 "C" scale.

VERTICAL BENDS:



2'-0" RAD. X 30° VERTICAL BEND
 "A" = DROP MINUS 6 7/16"
 "B" = 1.7320 X "A"
 "C" = 2 X "A"



2'-0" RAD. X 45° VERTICAL BEND
 "A" = DROP MINUS 1'-2 1/16"
 "B" = 1.414 X "A"

**Other Products designed, fabricated
and installed by Allied:**

- 1 1/2", 2", 3", 4" & 6" Pitch Overhead Monoveyors
- 6" & 8" Pitch Enclosed Track Monoveyors
- Power & Free Overhead Monoveyors
- Floor Line Drag Conveyors
- Flat-Top Pallet Conveyors
- Slat Conveyors
- Belt Conveyors
- Hinged Apron Conveyors
- Live Roller (Chain or Belt Driven) Conveyors
- Wire Mesh Conveyors
- Spindle Type Conveyors
- Free Monorail Systems c/w Box or Tongue Switches

**Allied Conveyor Systems, Inc. also has Hydraulic Bending
and Structural Steel Rolling Facilities.**

All-Flex is a registered trademark of Allied Conveyor Systems, Inc.



**Allied Conveyor Systems, Inc.
PO Box 1054
Statham, GA 30666
USA**

866.959.2993

www.AlliedConveyorSystems.com

This catalog illustrates the various Allied AllFlex® Series Components available for use in making up a conveyor system. Allied Conveyor Systems, Inc. disclaims all responsibility for any equipment or system, malfunction, violation of law, property damage, personal injury or any damages resulting from the equipment selection, design, installation or operation carried out by a contractor.